



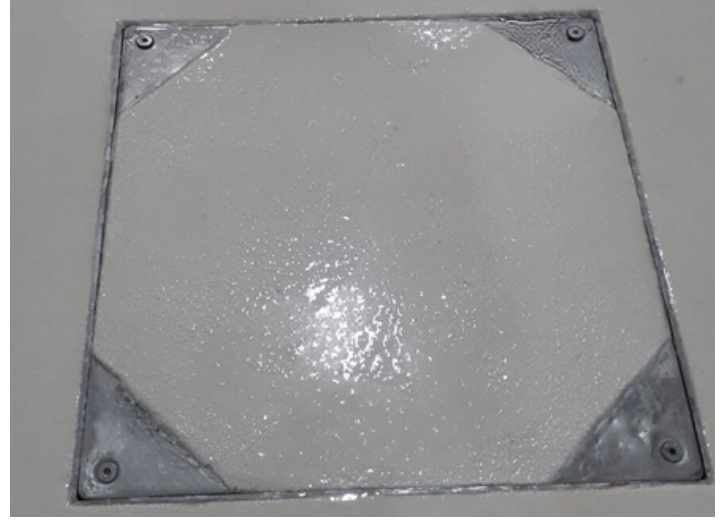
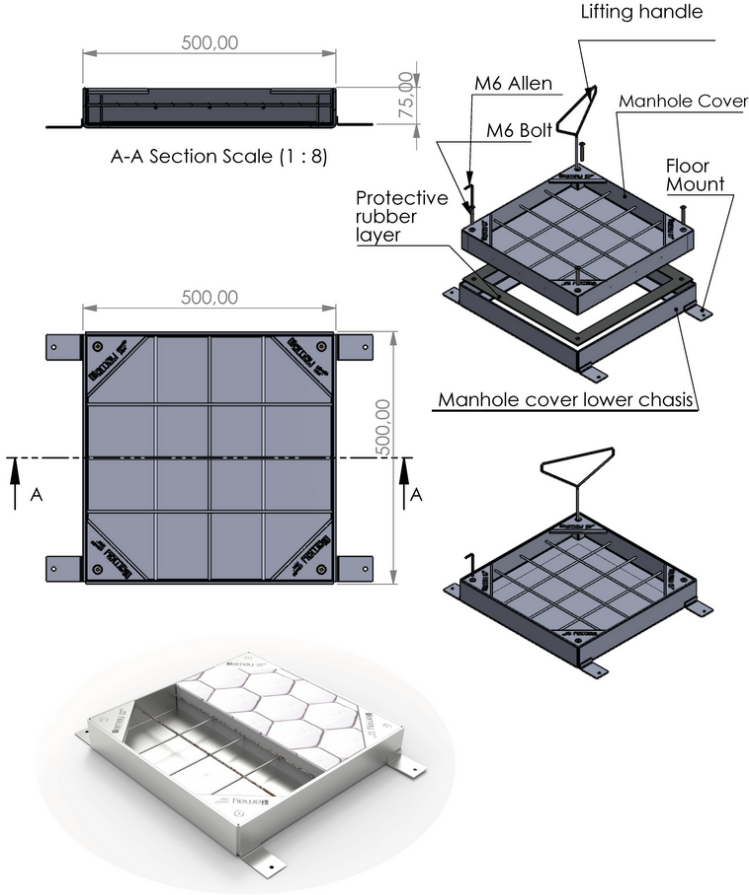
**DRAIN**

## Rögar / Ani Müdahale Kapakları

### Manhole Covers

Paslanmaz çelik rögar kapakları, endüstriyel tesislerde drenaj sistemine acil müdahale etmek amacıyla kullanılmaktadır. Rögar kapaklarımız, üzeri seramik döşemeye uygun olarak veya paslanmaz sac kaplı olarak üretilmektedir.

*Stainless steel manhole covers are used for emergency intervention in drainage systems in industrial facilities. Our manhole covers are produced with a ceramic tile-compatible surface or with stainless steel sheet covering.*



#### Rögar Kapakları / Manhole Covers

Ürün Kodu / Product Code	Ölçüler / Dimensions (mm)
RG500	500x500x75 mm (h)
RG600	600x600x75 mm (h)
RG700	700x700x75 mm (h)
RG800	800x800x75 mm (h)

